

Manual for the installation of Libra N1 for Windows XP with Servicepack 2

HINT:

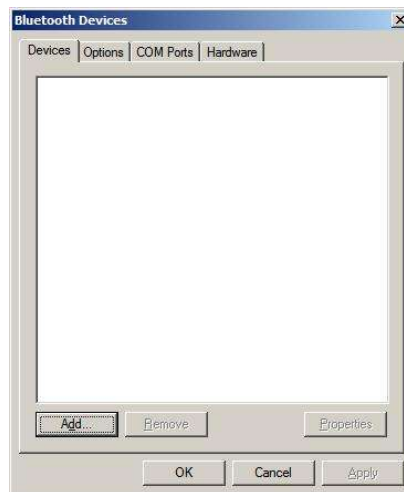
Installing the Widcomm software when Windows XP with Servicepack 2 is installed may cause trouble. It is recommended to use Microsofts own bluetooth software under Servicepack 2.

Installation under Windows 98SE / 2000 / ME / XP without SP2

Please refer to the manual that came with the product.

Installation under Windows XP with SP2

1. Plug in the Dongle
2. Windows will detect the new hardware and start looking for a driver.
3. Select „Install driver automatically“
4. After the installation is finished, the Bluetooth-symbol will be available in the system tray.
5. Double click the symbol to open the Bluetooth menu. Klick „Add“ to add new devices.



6. Turn on the presenter's power switch, then select „My device is set up and ready to be found“ and hit „Next“



7. The next window shows the devices in range. Select the presenter and hit „Next“.



8. Click on the presenter and hit „Next“
9. Select „Don't use a passkey“ and hit „Next“ to proceed.



10. The software will setup the presenter.



11. The installation is finished and the presenter is ready to be used.
12. To connect other devices, please go back to step 6.